

AVAILABLE



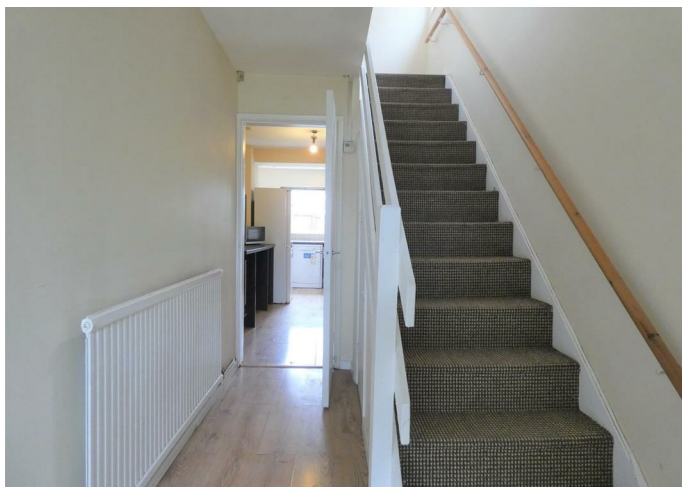
House - Semi-Detached

# GLENEAGLES AVENUE LEICESTER LE4 7YJ

£1,100 PCM

## FEATURES

- Fitted Kitchen
- Fully Furnished
- Spacious Lounge
- Gas Central Heating
- Appliances Included
- 3 Bedrooms
- Large Property
- Fitted Wardrobes



 **SETHS**

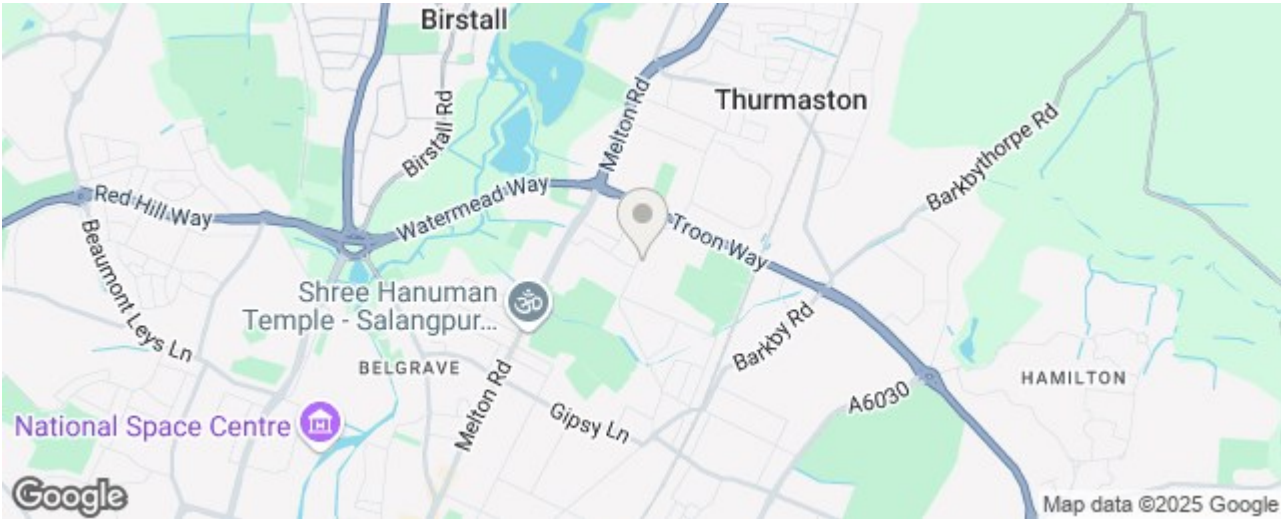
# 3 Bedroom House - Semi-Detached located in Leicester

**\*\*No Deposit Option Available\*\***

Seths are proud to present this beautifully maintained three bedroom semi detached home, ideally situated in the highly sought-after area of Rushey Mead on Gleneagles Avenue. This stylishly furnished property offers a comfortable and practical layout, featuring a spacious lounge, a well equipped kitchen with a dedicated dining area, and a modern family bathroom. Upstairs, you will find two generously sized double bedrooms and a single bedroom, with fitted wardrobes conveniently provided in two of the rooms. The home also comes complete with essential appliances, including a fridge freezer, washing machine and dishwasher, making it move-in ready.

Perfectly positioned for family living, the property is within walking distance of excellent schools, supermarkets, and a range of local shops, making everyday life incredibly convenient. With its blend of comfort, location and functionality, this home presents a fantastic opportunity for those seeking a balanced lifestyle in a vibrant community. Early viewing is highly recommended to avoid disappointment.

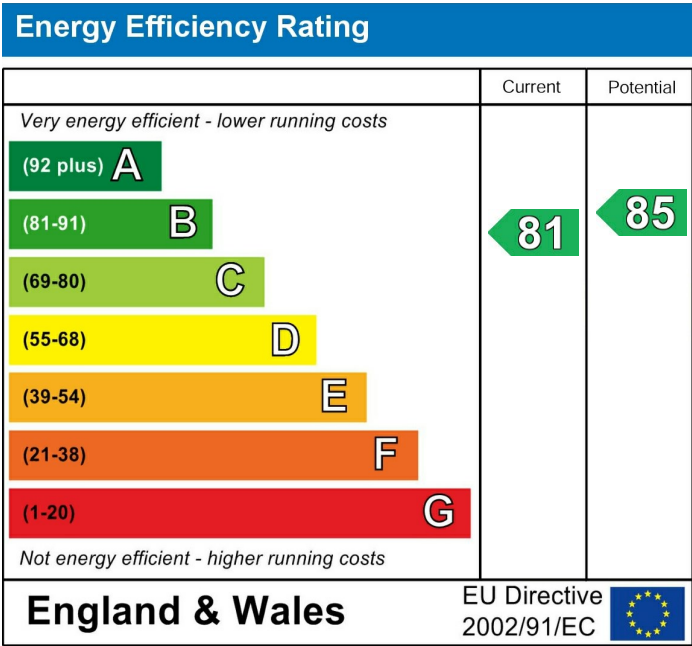
Rent: £1100PCM  
Security Deposit: £1265  
Tenancy Length: 6 or 12 Months  
Council Tax Band: B  
Pets may be considered at the landlord's discretion and will be subject to a higher rent.



Call us on  
**0116 266 9977**

**let@seths.co.uk**  
**www.seths.co.uk**

**Council Tax Band**  
**C**



Agents Note: Whilst every care has been taken to prepare these particulars, they are for guidance purposes only. All measurements are approximate and are for general guidance purposes only and whilst every care has been taken to ensure their accuracy, they should not be relied upon and potential buyers are advised to recheck the measurements.

